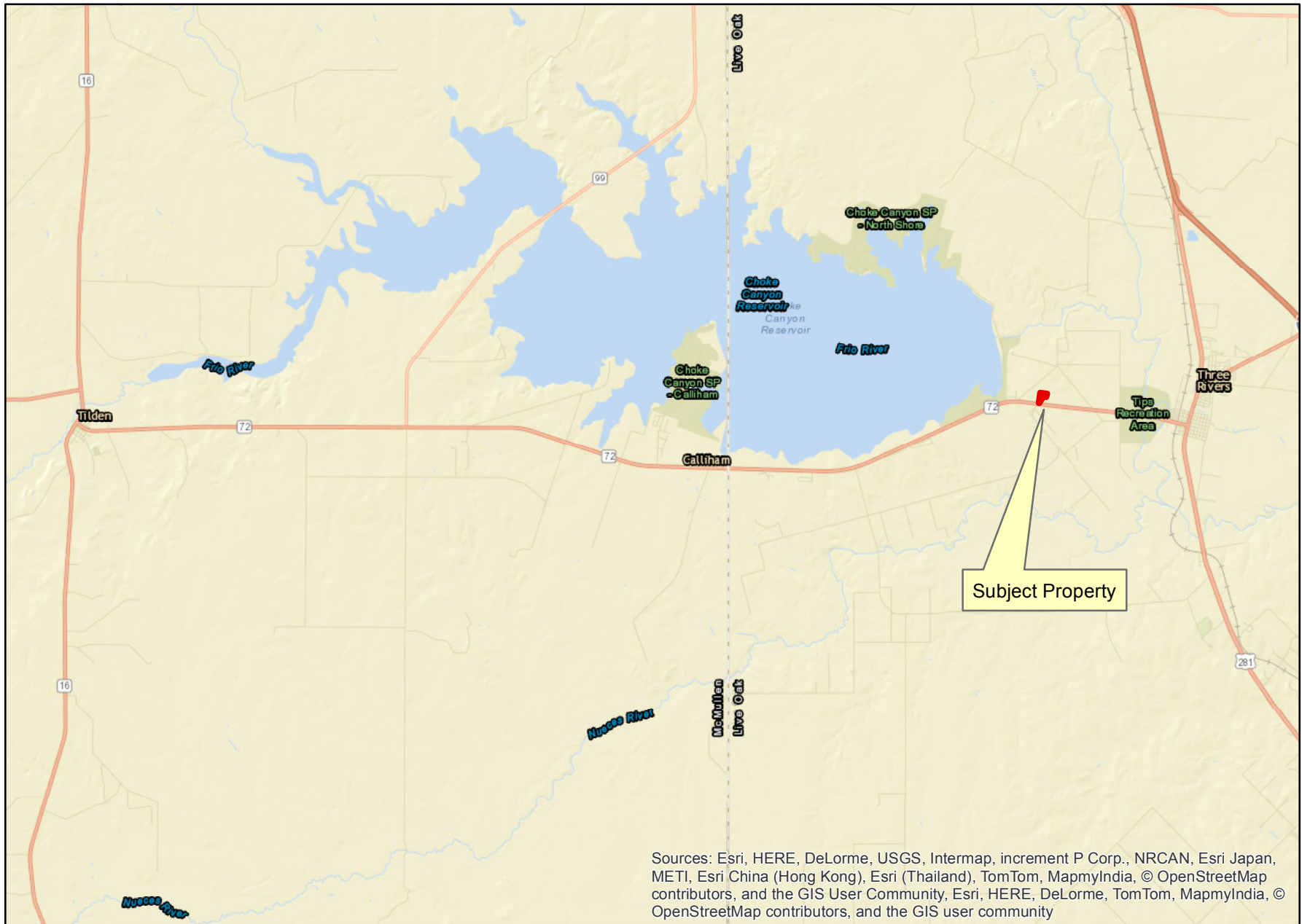


Eagle Ford Shale Location



Sources: Esri, HERE, DeLorme, USGS, Intermap, increment P Corp., NRCAN, Esri Japan, METI, Esri China (Hong Kong), Esri (Thailand), TomTom, MapmyIndia, © OpenStreetMap contributors, and the GIS User Community, Esri, HERE, DeLorme, TomTom, MapmyIndia, © OpenStreetMap contributors, and the GIS user community



Office
(361) 786-2562

Dockery
& ASSOCIATES
P.O. Box 459
Three Rivers, TX 78071
www.dockery.cc

Fax
(800) 536-8115

1 inch = 3.2 miles
0 9,500 19,000 38,000 Feet